

# Contract Machining

INSPIRED BY YOU. CREATED BY US.



Over 90 years of industry-leading innovation

# ELSNER™

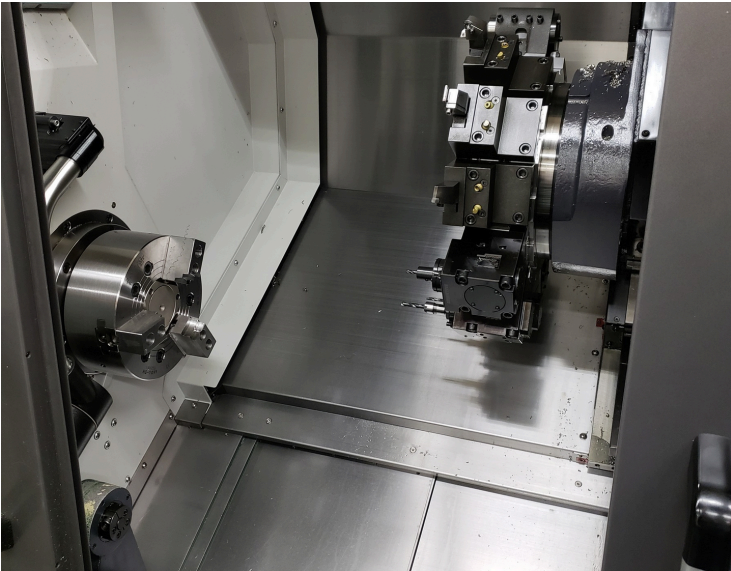
— PURPOSE BUILT PRECISION —

ISO 9001:2015 Certified



# ELSNER<sup>TM</sup> CAPABILITIES

MACHINING, WELDING, FABRICATION PAINTING, ASSEMBLY, ENGINEERING



## Big or Small Parts

We can make a wide range of parts to suit your needs.

## Efficient Turnaround Times

We'll get the job done quickly and accurately.



## We're an OEM

We have been in business since 1934 and ISO 9001:2015 Certified. We are up to any challenge.

## No Minimum Quantity

We'll produce a million or one. It is up to you.

## Machine Rebuild & Assembly

We make it convenient for you.

## Parts Pick up & Delivery

We'll make sure you conveniently get your parts.



### ADDITIONAL SUPPORT SERVICES INCLUDE:

Repair parts, reverse engineering, breakdown services, electrical panel wiring, plating & hardening solutions, 3D Printing and engineering consultations.

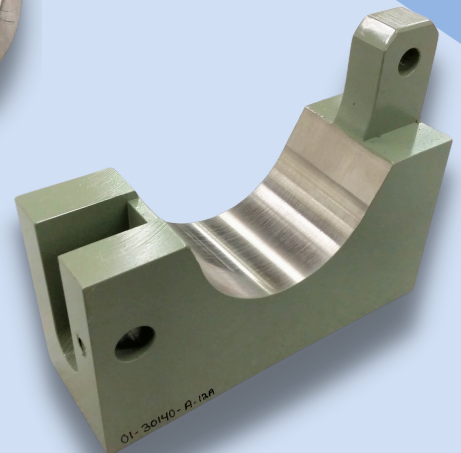
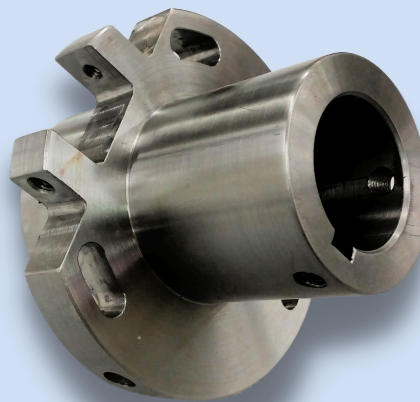
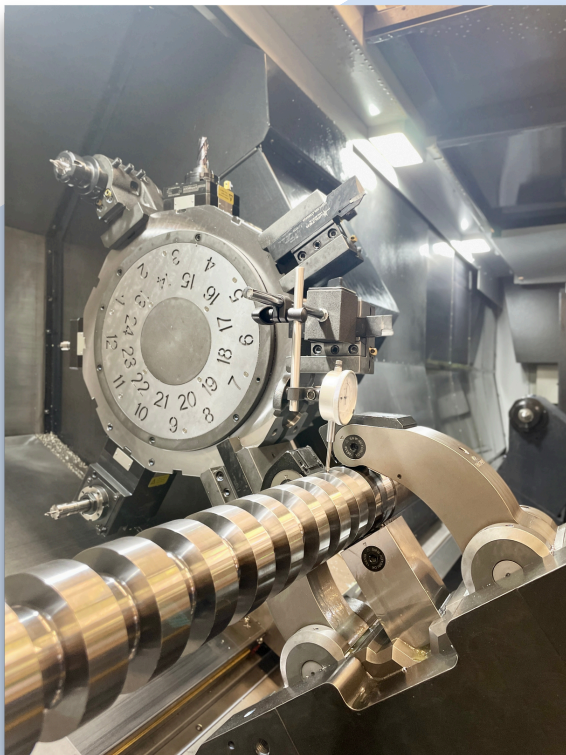
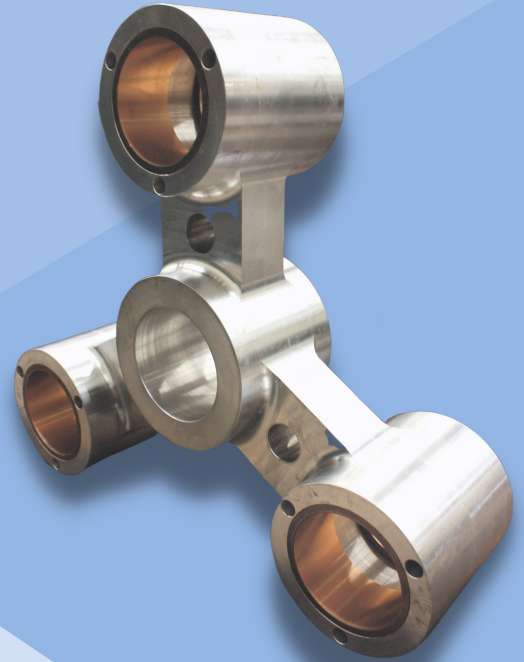
# ENDLESS POSSIBILITIES

TURN-KEY ENGINEERING FROM START TO FINISH

ELSNER is here to exceed your expectations in every way. Incomparable integrity, craftsmanship and service have been our heritage, passion, and promise to our customers for more than 80 years.

## OUR WORKABLE MATERIALS

- stainless steel
- carbon steel
- aluminum
- non-ferrous metals
- composites
- plastic



"It is appreciated and helps build loyalty by knowing you help us build a better product that we are all proud of." ~ hydraulic reserve tank manufacturer.



# FACILITIES LISTINGS

Visit our 118,000 sq.ft. facility

## CNC MILLS

- Clausing Mill SUP6BVSCNC, 45915, 41" x 19" x 16", 5HP Acu-Rite 3500i control
- Clausing Mill SUP6BVSCNC, 5113, 41" x 19" x 16", 5HP Acu-Rite 3500i control
- Clausing Mill SUP8BVSCNC, 47220, 46.6" x 22.25" x 20.57", 7.5HP, Acu-Rite Mill Pwr G2 control
- Daewoo DVM4020, 12102, 40" x 20", 20 5HP, 24 tool, 1000 psi coolant thru, 4th axis rotary table
- Daewoo DVM4020, 12206, 40" x 20", 20 5HP, 30 tool, 1000 psi coolant thru, 4th axis rotary table
- Doosan DBC 110S, 49017, 78.4" x 59" x 47.2" x 21.6", 35HP, 40 tool, coolant thru, 4th axis table
- Doosan DNM6700, 47320, 51.18" x 26.38" x 24.6", 25HP, 30 tool, 12k spindle, coolant thru
- Doosan DNM750L/50 II, 47421, 85.03" x 30" x 25.6", 30HP, 30 tool, 8k spindle, coolant thru, 4th axis rotary table
- Fanuc Robodrill D21MiB5RR5-Plus-K, 47923, 5 axis, 19.69"x15.75"x15.75", work 25.6"x15.7", 65 tool, 10k spindle, coolant thru
- Mighty 2100AP Viper, 6000, 81" x 41.3" x 32.3", 30HP, 4th axis rotary table
- V-Tec VF-4000, 46005, 164" x 84" x 36" 25HP, 60 tool, coolant thru, right angle head

## MANUAL MILLS

- Bridgeport Series 1, 1581, 27" x 9" x 16", 2HP
- Bridgeport Series 1, 4385, 27" x 9" x 16", 2HP
- Bridgeport Series 1, 21164, 20" x 9" x 16", 2HP
- G&L DP4T Boring Mill, 2774, 87" x 55" x 30", 20HP, 4" spindle

## CNC LATHES

- Doosan Puma 2600LY, 47517, 10" chuck, 51.6" turning length, 30HP, 3" X 48" bar feed, Y axis live tooling
- Doosan Puma 2100Y, 47619, 8" chuck, 20.47" turning length, 30HP, 2.625" X 48" bar feed, Y axis live tooling
- Doosan Puma 3100ULY, 47721, 12" chuck, 123" turning length, 40HP, follower rest, Y axis live tooling
- Nakamura MX-100, 48023, 9 axis millturn, 6" chuck, turning 34.25"L 12"D 48"x2.5" barfeed, 72 tool, 20k 1000psi coolant thru
- Okuma Crown E, 3298, 8" chuck, 19.7" between centers, 12HP

## EDM MACHINES

- GF Agie Charmilles CUT C 600, 48123, wire edm, travel 23.62" x 15.75"x13.78", work 40.55"x31.50"x13.78"
- GF Agie Charmilles CUT C 600, 48223, wire edm, travel 23.62" x 15.75"x13.78", work 40.55"x31.50"x13.78"

## INSPECTION

- Faro Arm Portable CMM, 45815
- Hexagon Metrology Arm, 47821
- Phase II Hardness Tester, 46215

## MANUAL LATHES

- Mazak-30, 3088, 28" chuck, 120" between centers, 20HP, steady rest, gap swing 40.5" x 12.5"
- Monarch 612, 2267, 16" chuck, 54" between centers, 10HP, steady rest
- Monarch EE, 2180, 10" chuck, 20" between centers, 5HP

## GEAR MACHINES

- Barber-Coleman 16-16 Gear Hobber, 11790, 16" dia, 2HP
- Fellows 6A Gear Shaper, 4462, 18' dia x 5", 3HP

## MANUAL GRINDERS

- Brown & Sharpe Micromaster Surface Grinder, 10064, 12"x36", 5HP
- Cincinnati Cylindrical Grinder, 8460, 14" dia x 84", 5HP

## WELDING MACHINES

- Hypertherm Powermax1000, 39205, Plasma Cutter 1" capacity
- Miller Spectrum 875, 40921, plasma cutter 7/8" capacity
- Miller Welder 350-P, 40607, Mig, wire feed
- Miller Welder 350-P, 40707, Mig, wire feed
- Miller Welder 350-P, 40807, Mig, wire feed
- Miller Welder 350-P, 41121, Mig, wire feed
- Miller Welder 350-P, 47117, Mig, wire feed
- Miller Welder Dynasty 200 DX Pulse, 46115, Tig
- Miller Welder Syncrowave 300, 41021, Tig
- Miller Welder Syncrowave 350 LX 35600, Tig
- Rex FRU-20 Spot Welder, 4446

## SAWING MACHINES

- Baileigh CS-350EU, 42021, cold saw
- Do-All 3012-U Vertical, 3763, 12" x 30", 3HP
- Do-All 3613-1 Vertical, 4188, 13" x 36", 3HP
- Do-All C-305A Horizontal, 4508, 12" x 12", 5HP
- Do-All C-305A Horizontal, 4694, 12" x 12", 5HP

## SHEET METAL

- Guifil GHE 625 Shear, 12093, 8'4" length, 32 Ton
- Steelweld H3½-8 Brake Press, 5046, 11.5' length, 7.5HP, 112 tons

## OTHER MACHINES

- American H-10-48 Broach, 4838, 10 ton
- Brown & Sharpe Micromaster Surface Grinder, 10064, 12"x36", 5HP
- Dake 75H Hydraulic Press, 38405, 75 ton capacity
- JBI DB-1010-S Paint Booth, 23094, 7'x9 ½'x9 ½'
- Landis Threading Machine, 4239, 8" chuck, 12"
- Lemco Shaft Straightening Press, 8863, 4" dia, 12 Ton
- Royson Engineering 3CTV-IS Vibratory Finisher, 48323, 38"x14"
- Sunnen MBB-1660 Hone, 10478, 16" length, ½HP

## 3D Printing

- Markforged X7 Printer
- Prints Continuous Carbon Fiber

The entire manufacturing area is air conditioned and all bays are served by overhead cranes with capacities ranging from 2 to 10 tons, up to 19' under the hook.

**ELSNER**<sup>TM</sup>  
— PURPOSE BUILT PRECISION —

475 FAME AVENUE, HANOVER, PA 17331  
717.637.5991 | EEW@ELSNERENG.COM  
ELSNERENG.COM



**MADE IN  
USA**

©2025 ELSNER ENGINEERING WORKS, INC